

# Highway Embankments – Cuts - Structures

## Final geotechnical designs for Poligiros – Uranoupoli Motorway

Greece

### Project

Geotechnical surveys, earthworks final geotechnical designs (embankments and cuts) and foundation designs for overpasses, underpasses, culverts, bridges, cut & covers of a 38 km motorway stretch at Poligiros – Uranoupoli motorway, Greece.

### Design Cost

Design cost: approx. € 321 k.

### Project Schedule

Design: 2010 – on going

### Project Description

- Total highway length: 38km
- Embankments' total length: 1km
- Embankments' height: 14 – 21m
- Cuts' total length: 0,5km
- Cuts' height: 9 - 40m

### Geology

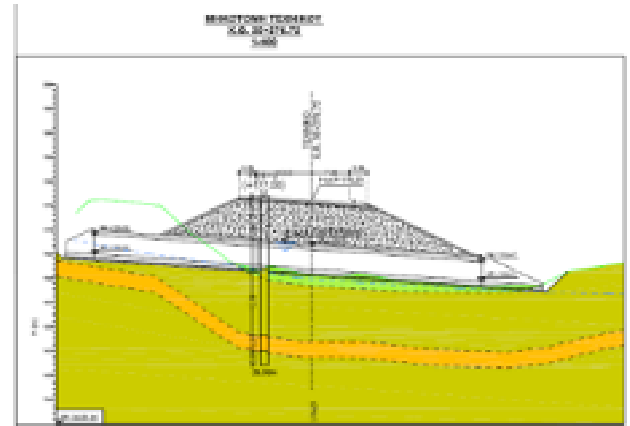
Gneisses, peridotites and dunites, recrystallised limestones or marbles, phyllites, red clays, alluvial deposits and alluvial fans

### Our Services

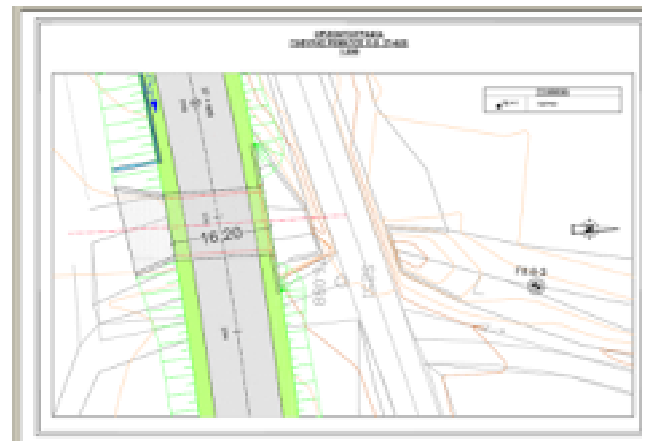
- Geotechnical surveys programming
- Execution of geotechnical investigation campaigns
- Geological – geotechnical interpretation and evaluation
- Earthworks final geotechnical designs (cuts and embankments)
- Foundation designs for overpasses, underpasses, bridges, culverts, cut & covers
- Elaboration of technical reports, construction drawings, calculation notes
- The project was undertaken in the frames of the Design Consortium "Prisma Consulting Engineers S.A. – Omikron Kappa Consulting S.A. – Markos Liras – Ioannis Pantekis – Konstantina Michalopoulou"

### Client

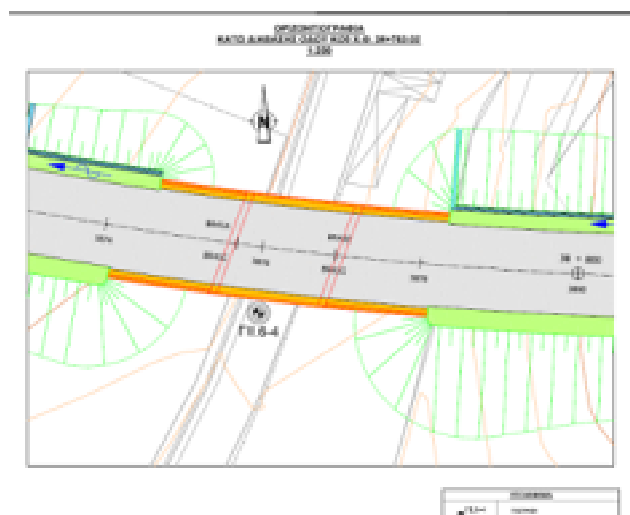
MINISTRY OF INFRASTRUCTURE, TRANSPORTATION AND NETWORKS (GR)



Cut & cover's longitudinal section



Bridge's plan view



Underpass's plan view