

Mining Project

Perama Hill Gold Project - Mine Waste Management Facility (MWMF)

Evros, Thrace, Greece

Project

Front – End Design of the Mine Waste Management Facility (MWMF) at Perama Hill Gold Project
 Geological - geotechnical interpretation report of Perama Hill process plant
 Detailed engineering design of the main access road to the plant site

Capital Cost (Capex)

Total cost: approx. € 148,5 m.

Project Schedule

Design: 2013 – 2014
 Construction: 2013 – on going

Project Description

- Mine Waste Management Facility (MWMF)
 Basin area ≈ 24Ha
 Storage Capacity: 6,9 Mm³
 Embankments: Upstream / Downstream / Eastern / Western / Downstream Collection Embankment
- Max. dams crest length: ≈ 1,137.3m
- Max. dams crest width: 10m
- Max. dams height: ≈ 55m
- Max. dams height in axis ≈ 45m

Process Plant

Total process plant site area: ≈ 85.000m²

Main Buildings / Facilities:

700t storage silo, Cil tanks, Tailings thickener & filter tanks, Tailings dewatering building, Process water tanks, Milling, Cil flocculant, Electrical sub-station building etc.

- Foundation on different elevations (min: +105m / max: +130m)

Main Access Road

Road Length: 6.3km, Bi-directional road, Lane per traffic direction : One (1), Lane's width: 3.5m, Total pavement width: 8m, Asphalt pavement, Lay Bys: every 500 – 700m

Geology

Weathering mantle, sandstone, andesite, andesitic breccias & tuffs, groundwater

Our Services

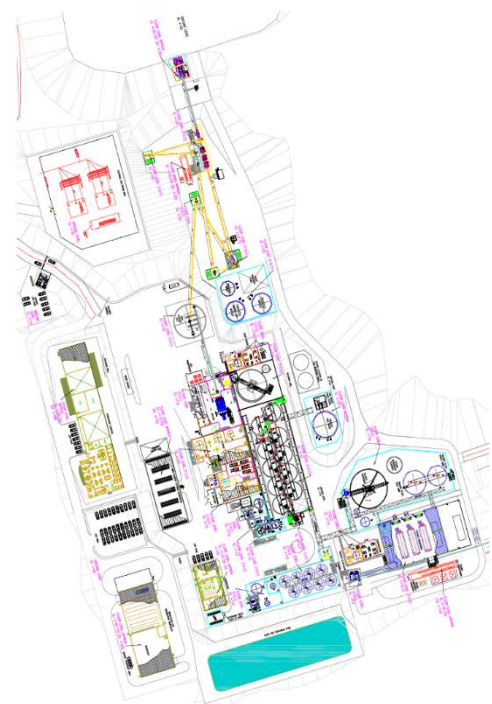
- Front – End Design of the Mine Waste Management Facility (MWMF) at Perama Hill Gold project
- Final Geological – Hydrogeological – Geotechnical Interpretation and Evaluation of the process plant
- Detailed design of the main access road to the process plant and its junction with the side service road
- BoQs
- Technical Specifications and Technical Description for the construction project

Client

THRACEAN GOLD MINING S.A.



Perama hill project general view



Process plant plan view