

## Mining Project

# Tender designs for Quarry Development and Operation in Khatmat Malaha, Oman

## Oman

### Project

Detailed 3D tender quarrying design for the development and exploitation of Quarry 1 in Khatmat Malaha, Oman along with quarrying, haulroads and production scheduling detailed tender design

### Project Schedule

Design: 2018  
Development - Mining: 2019 - 2022

### Project Description

- Two way traffic haulroad: L=1,550 m, berm width=15m
- Quarry 1 lease boundary overall surface area approx. 0.95km<sup>2</sup>
- ROM production approx. 10 Mt of final aggregates product for the first three (3) years
- Waste handling 2Mt for the first three (3) years

### Geology

Laminated fine to medium and coarse grained massive gabbro. Ultramafic rocks, dolerite dykes, recent alluvium deposits

### Mining Method

Hill-side quarrying

### Commodity

Gabbro aggregates

### Our Services

Preparation of the technical offer and tender design of:

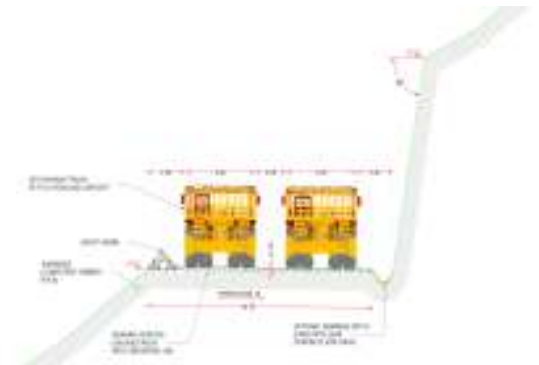
- Quarry design & layouts to meet annual production requirements
- Main haulroad
- Road for waste haulage
- Slope stability analyses
- Evaluation of the gabbros reserves block model

Tools utilized:

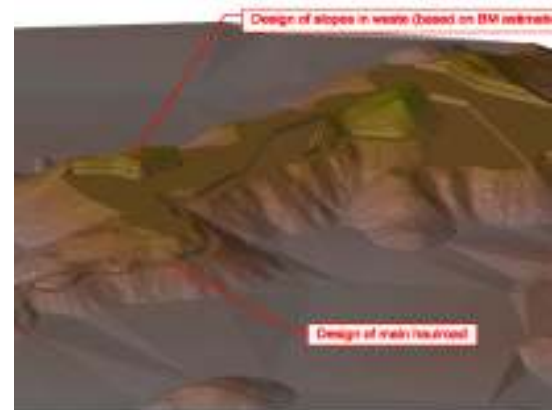
- Geovia Surpac (quarry & road design, earthwork calculations)
- Itasca 3DEC (assessment of structurally induced instabilities)

### Client

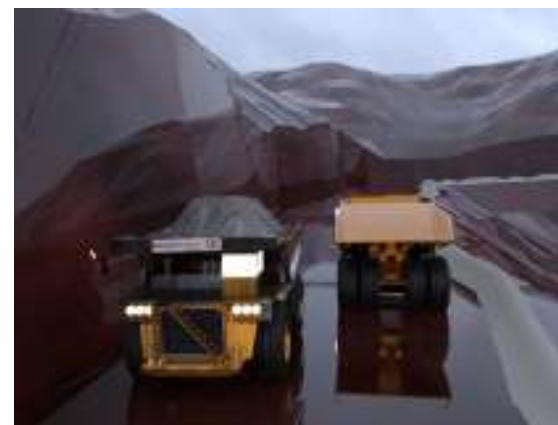
AKTOR – General Engineering Technologies / G.E.T. (Qatar Primary Materials Company)



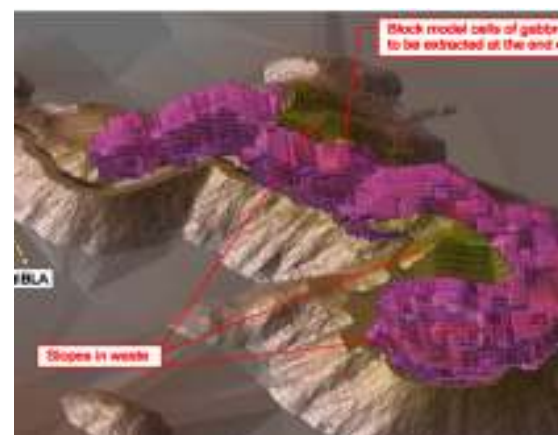
Haulroad typical cross section



Hill-Side Development



Fleet Dimensioning



BM Development