

Mining Facility Project

Eldorado Gold Skouries Process Plant

Northern Greece

Project

Geotechnical Investigation and Evaluation of the Process Plant Area accompanied by Foundation Parameters Estimation. Earthworks Geotechnical Detailed Design for all Embankments, Cuts, MSEWs and Major Concrete Walls of the Process Plant Area.

Construction Cost

Total project's cost: approx. € 32.5 m.

Project Schedule

Design: 2013 - 2016
Construction: 2013 – on going

Project Description

Excavation's volume: ~1.600.000 m³
Backfilling volume: ~1.200.000 m³
Area of works: ~ 520.000 m²

Geology

Amphibolites – amphibolitic gneisses, Biotitic gneisses, Pegmatites, Marbles, Tectonic breccias, Mylonitized zones

Our Services

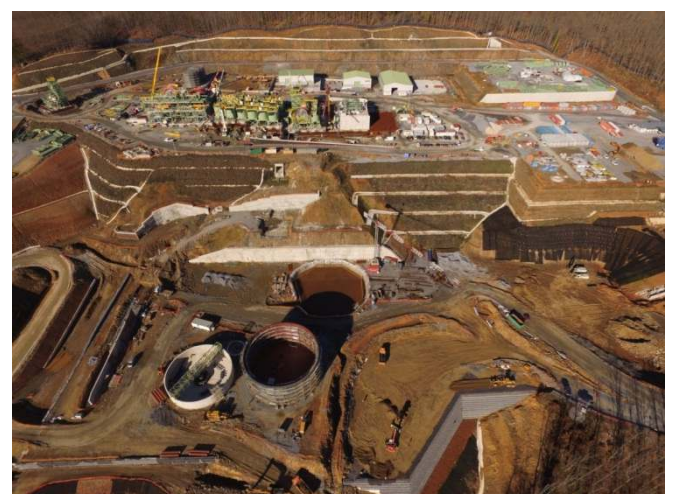
- Final Geological – Geotechnical Design of the Process Plant
- Final Geotechnical & Structural Design of Earthworks and Retaining Walls of the Process Plant Area (permanent open cut slopes, embankments, mechanically stabilized earth walls (MSEWs) and retaining walls)
- Final Geotechnical Road Design of the Process Plant
- Preliminary and Final Geotechnical Design of Temporary Deposit at Open Pit Area
- Final Geotechnical Design of Earthworks for the Mine Water Storage Ponds Area
- Estimation of foundation design parameters
- Design conditions under Fast-Track process

Construction Details

- Construction of cuts, slopes up to 3:1, max. height 31m
- Construction of reinforced embankments, slopes 2:3 up to 1:1, max. height 42m
- Construction of MSEWs, slopes up to 80°, max. height 30m, implementation of conveyor's pylon foundation
- Concrete retaining wall, max. height 18m founded on double pile rows
- High seismicity consideration

Client

Construction by AKTOR S.A.



General view of the area of construction works

Mining Project

Positioning and Foundation Pre-Design of Skouries Ore Processing Plant

Stratoni, Chalkidiki

Northern Greece

Project

Positioning and foundation pre-design of Skouries ore processing plant and affiliated surface facilities and infrastructures

Construction Cost

Total cost: approx. € 1.5 m.

Project Schedule

Design: 2008 - 2009

Construction: 2012 - 2017

Project Description

Positioning of the Skouries ore processing plant complex

Geology

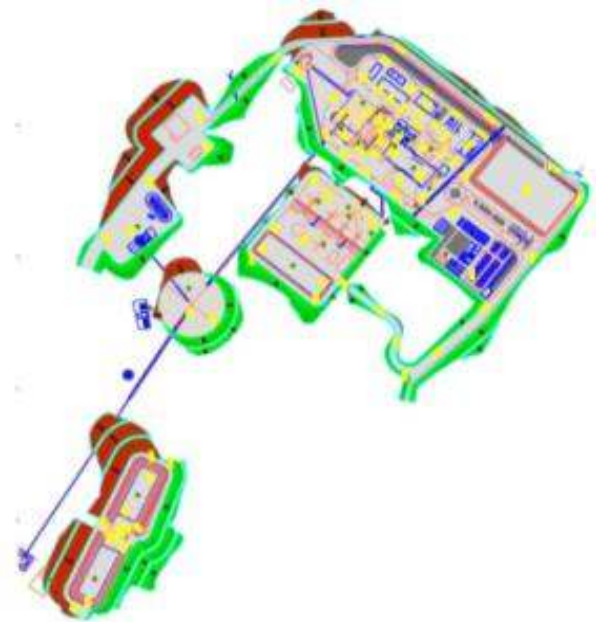
Schists, porphyries, alluvial deposits

Our Services

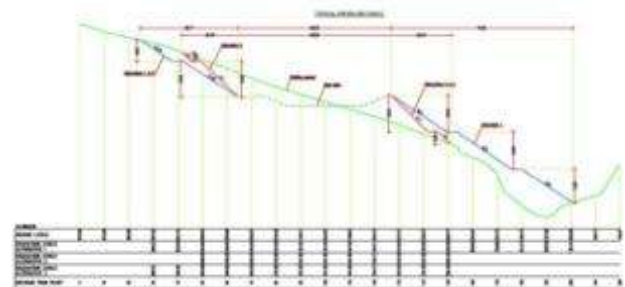
- Preliminary geotechnical assessment
- Preliminary determination of the range of the design parameters
- Preliminary assessment of the foundation requirements
- Preliminary design of the required excavations for the construction of the process plant complex
- Preliminary assessment of excavation and backfills based on the various plant elevations included in the revised plant layout
- Preliminary indicative estimation of the geometrical restrictions which may arise from earthworks assessment
- Preliminary indicative estimation of the earthworks volumes produced by the assessment
- Elaboration of the geotechnical investigations program (geophysical surveys, boreholes, in situ and laboratory tests)
- Revision of the proposed geotechnical investigations program and preliminary assessment of excavations geometry

Client

HELLAS GOLD S.A. {Subsidiary of ELDORADO GOLD (CA)}



Plan view of Ore Processing Plant



Typical cross section of excavation and backfilling works