

Project

Special Feasibility Study for the investigation of Mavres Petres Mine expansion, above the absolute elevation of +300

Project Schedule

Design: 2018

Geology

Crystalline Schists formations of Serbian-Macedonian Massif, Precambrian origin, crossed by various Mesozoic and Cenozoic igneous intrusions. Encountered formations at the mine area: Tectonic amphibolites, Marble layer, Biotitic – Amphibolitic Gneisses

Underground Mining Method

Overhand cut & fill with ascending direction

Ore type

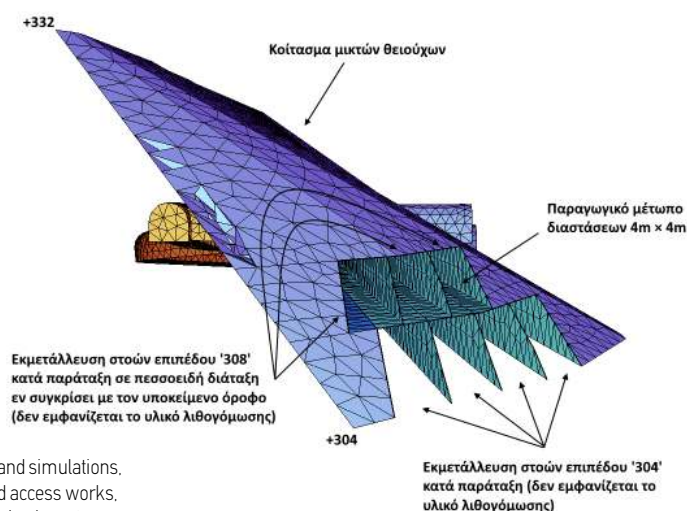
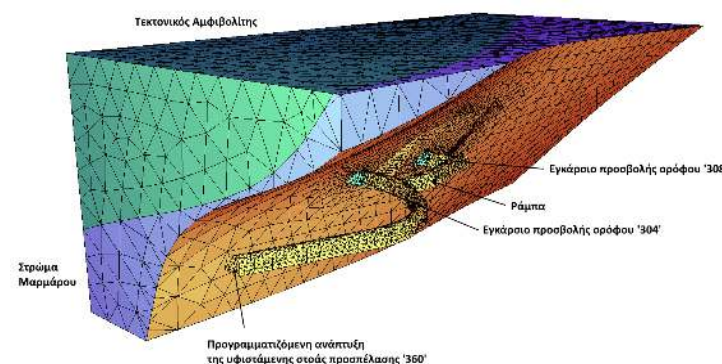
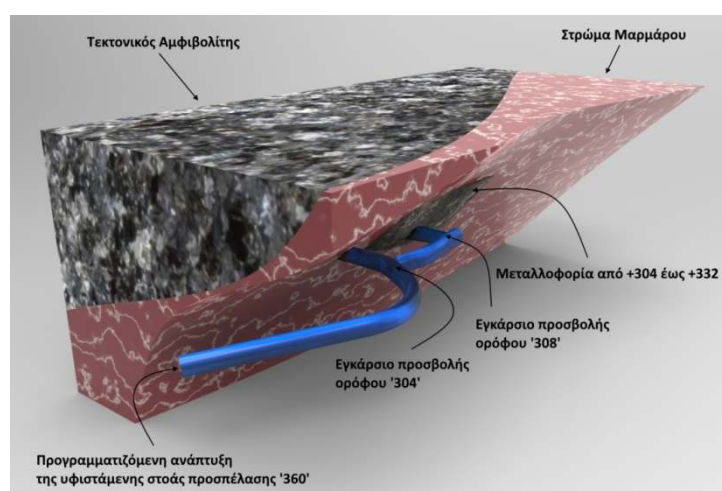
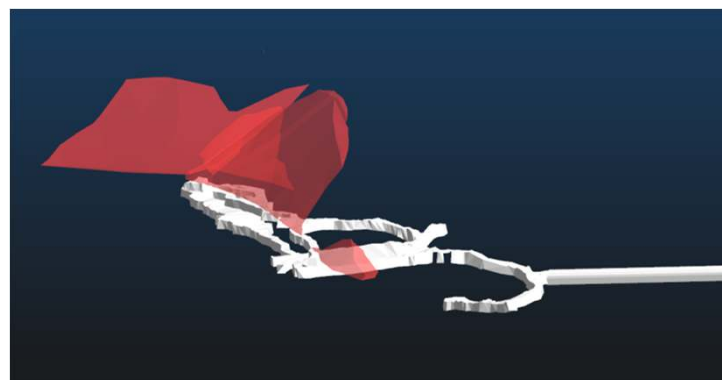
Mixed sulphide mine

Our Services

- Review of existing studies, drawings and initial data
- Review of the permit framework
- Evaluation of the topographical survey at the area of interest
- Appraisal of the deposit's geometry from +300 elevation and upper
- Evaluation of the 3d representation of the deposit
- Feasibility geometry check regarding the mining deposits above the absolute elevation of +300
- Elaboration of mine small scale 3D model
- Calculation of surface settlements from underground mining above +300
- Sensitivity analyses
- Update of the Permit Technical Study

Client

HELLAS GOLD S.A. (ELDORADO GOLD (CA) Subsidiary)



Three dimensional calculation models and simulations, representations of mining deposits and access works, three dimensional simulation of mine layout

Industrial Building

New water processing unit

Stratoni Mining Settlements

Northern Greece

Project

New water processing unit for the mining waters of "Mavres Petres" with the construction of tanks and the installation and operation of filter press

Construction Cost

Total cost: approx. € 0,15 m.

Project Schedule

Design: 2006

Construction: 2008-2009

Project Description

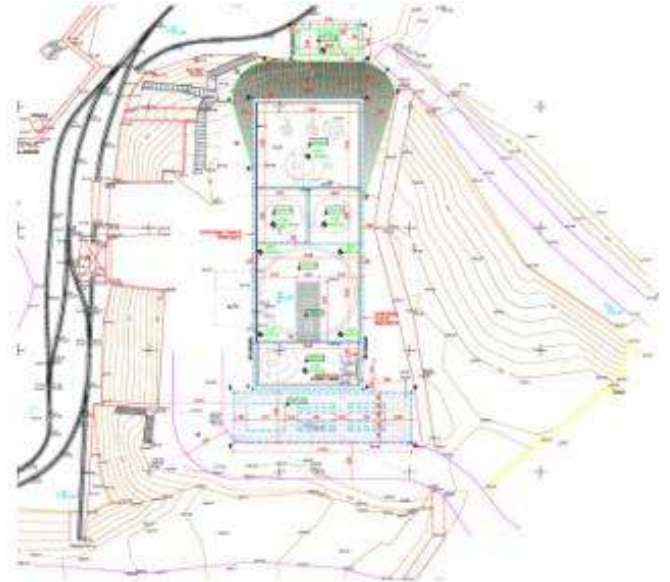
- The unit of water processing includes:
 - 1 reservoir of collection and settlement
 - 2 silo

Our Services

Detailed structural design

Client

HELLAS GOLD S.A. {Subsidiary of ELDORADO GOLD (CA)}



Water processing unit plan view

Mining Project

Underground Mixed Sulfide Ore Mining

Stratoni, Chalkidiki

Northern Greece

Project

Mavres Petres mixed sulfide ore mine

Annual production: approx. 250.000 ton ore

Project Schedule

Design: 2011

Operation: 2011-2018

Project Description

- Design of underground mining
- Mining method: overhand cut and fill

Geology

Gneisses, marbles, aplites, iron pyrites, mixed sulfide ore

Our Services

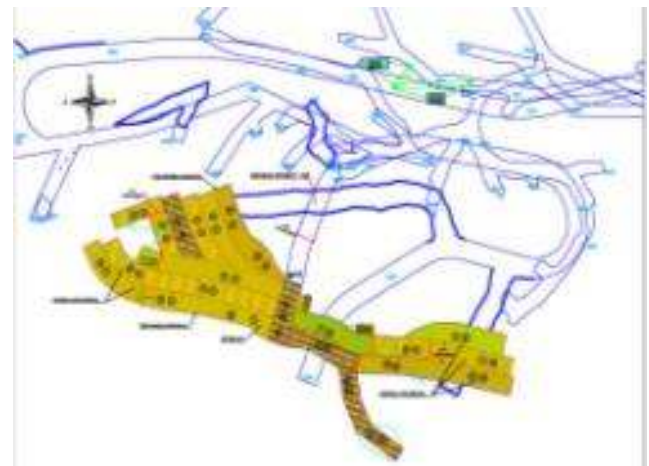
- Technical economical feasibility study for the mining of underground deposits
- Detailed technical & permitting mining design according article No 4 and 101 of the Greek Mining Regulation

Client

HELLAS GOLD S.A. {Subsidiary of ELDORADO GOLD (CA)}



Exploitation face



Horizontal section of orebody at +136



Access adit entrance +360

Mining Project

Sulphide Ores Mining Works

Stratoni, Chalkidiki

Northern Greece

Project

"Mavres Petres" mixed sulphide mine

Construction Cost

Total cost: approx. € 74/tn bauxite

Project Schedule

Design: 2004
Development: 2005 - 2013

Project Description

- Design of mining works
- Ramps
- Mining method: Cut & fill with widen face during retreat

Geology

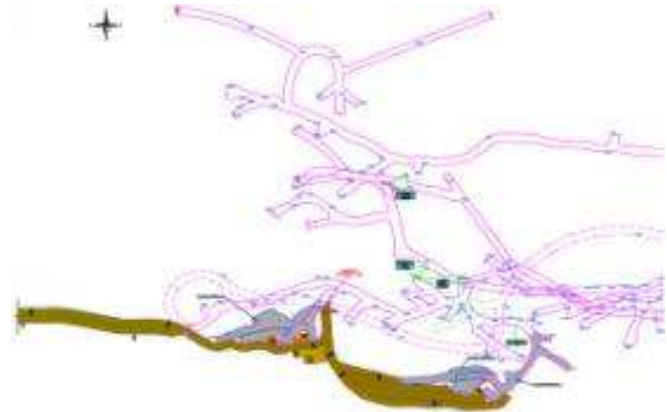
Gneisses, marbles, aplites, mixed sulphide ores

Our Services

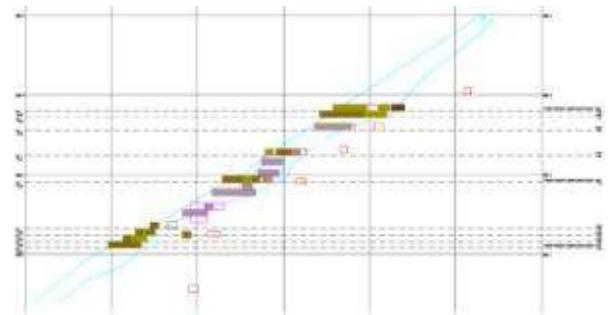
Technical – Economical Mining Design

Client

HELLAS GOLD S.A. {Subsidiary of ELDORADO GOLD (CA)}



Mining works plan view



Mining works cross section