

## Mining Project

# Mining of the lignite deposits at Achlada lignite mines, Southern Sector

Florina, Western Greece

### Project

Reserves estimation and Mining Design for the project: "Achlada lignite mines"

### Capital Cost (Capex)

Total cost: approx. € 23 m.

### Project Schedule

Design: 2013  
Development - Mining: 2014 - 2018

### Project Description

- Surface mining
- Total proven reserves:
  - "Giourouki" deposit: ~1.8Mt
  - "Southern Division" deposit: ~ 8.5Mt

### Geology

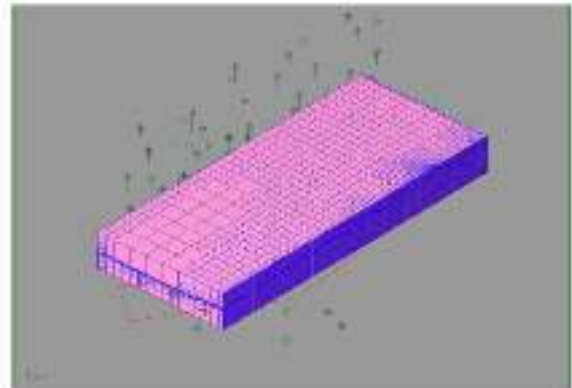
Schists, mainly mica schists, micro-crystalline limestones, Neogene lignite formations, recent Quaternary deposits consisting of conglomerates, sandstones, sand and contemporary alluvial

### Our Services

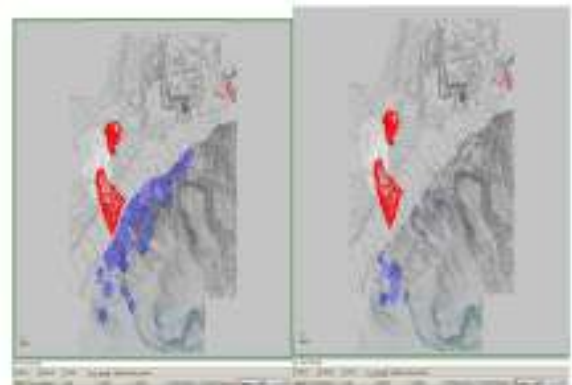
- Qualitative classification of the deposits and 3D modelling of the orebody
- Reserves estimation
- Life of Mine plan and production schedule
- Technical support of the revision of the Environmental Impact Assessment Study
- Determination of the required geotechnical parameters
- Geological - Geotechnical Interpretation and Evaluation
- Detailed description of the hydrogeological characteristics of the geological formations and of the groundwater conditions
- Determination of the expected geotechnical conditions
- Determination of the geotechnical profiles in the area of the surveys
- Slope stability design

### Client

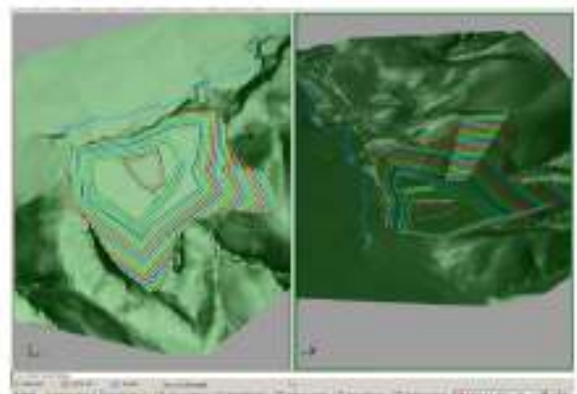
TERNA S.A. – AKTOR S.A. Joint Venture



Deposits' block model



3D modelling of the expected and of the probable deposits



3D modelling of the excavations at Southern Division, for lignite mining