

# Highway Axis Sibiu - Pitești, Section 4: Tigveni – Curtea de Argeș

Argeș County, Romania

## Project

Tender designs of highway tunnels, portals, embankments, cut slopes and structures for the Section 4: Tigveni – Curtea de Argeș, CH. 81+900 ÷ CH. 91+761, of the Project: Construction of Sibiu - Pitești Highway Axis.

## Construction Cost

Total project's cost: € 421 m.

## Project Schedule

Pre-Design: 2019 -2020  
Construction (estimated): 2020 - 2023

## Project Description

Highway works of 9.86km length, including 1.38km. of twin bore tunnel.

- Twin bore highway tunnel Momaia

Length: 1380 m  
Excavation cross section: 123.7 m<sup>2</sup>  
Effective cross section: 52.5 m<sup>2</sup>  
Excavation method: TBM Ø12.55 m

- Highway Cut Slopes

Total Length: 4.85 km  
Maximum Height: 45 m

- Highway Embankments

Total Length: 1.21 km  
Maximum Height: 14 m

- Highway Structures

The highway consists of the following structures:

- Lane Cover: 70 m length
- Pilewalls: 68 km length
- Retaining Walls: 3.1 km length
- Gravel piles
- Bridges

## Geology

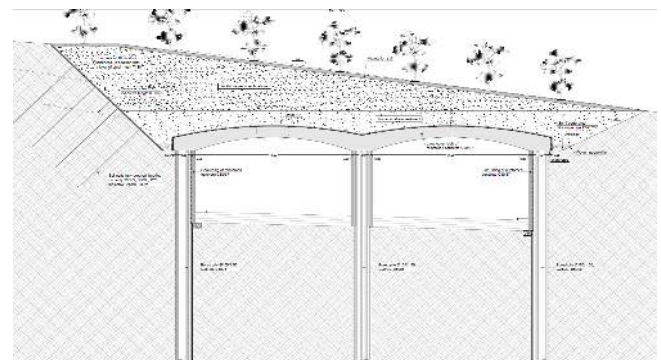
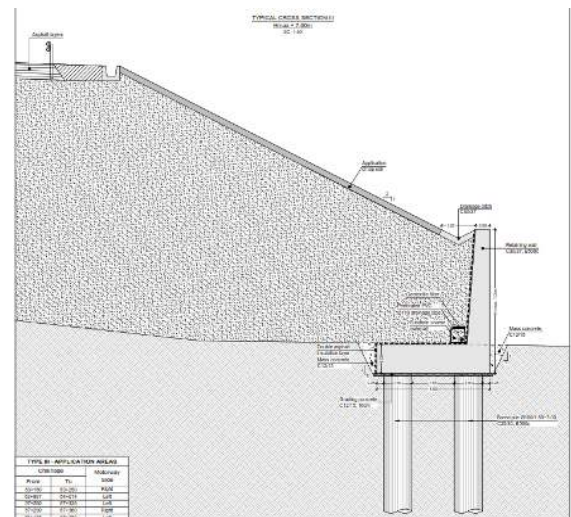
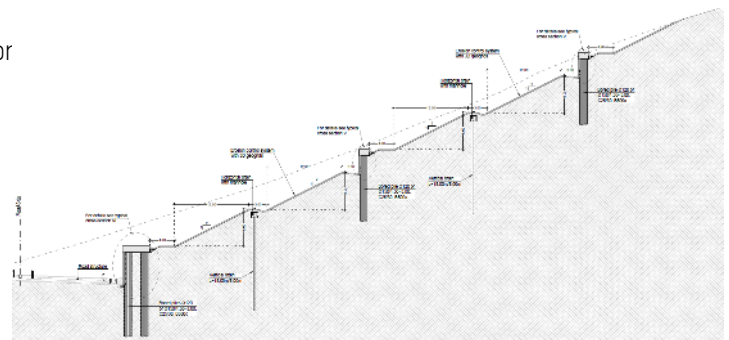
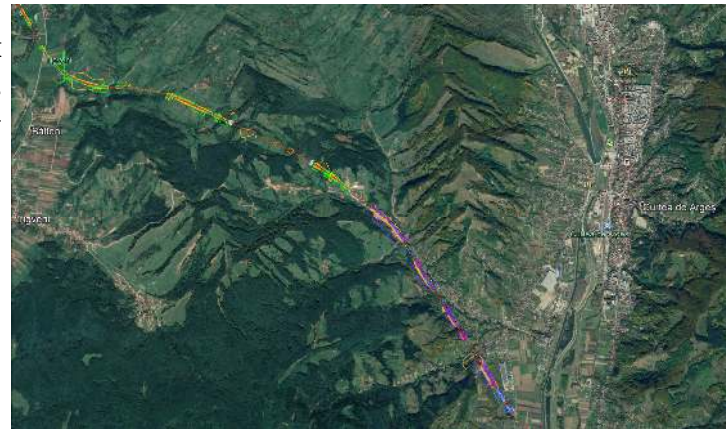
- Soil and clay formations of high plasticity
- Areas of major active landslides

## Our Services

- Tender predesigns and preparation of the Technical offer to be submitted by the tenderer
- Tender predesigns for Twin Tunnel, Cuts and Embankments
- Elaboration of typical cross sections drawings for cuts and embankments.
- Review of available geological and geotechnical designs
- Bill of Quantities (Materials – Works)
- Budget (Materials – Works)

## Client

AKTOR S.A.



# Tender Designs of Major Infrastructure Highway Projects Tunnels & Earthworks (Cuts & Embankments) of the Comarnic – Brasov Motorway

Romania

## Project

Tunnels, cuts and embankments of the Comarnic – Brasov Motorway, Romania.

## Construction Cost

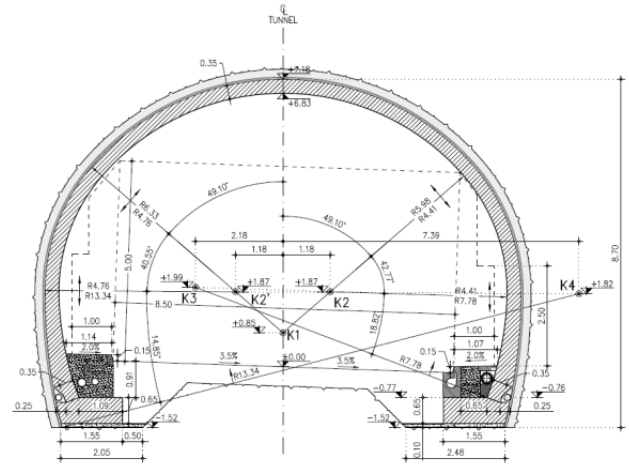
Total Cost approx. € 1.5bn.

## Project Schedule

Tender Design: 2013  
Construction: 2014 – in progress

## Project Description

Sinaia, Busteni & Predeal Twin Bore Highway Tunnels  
Sinaia length: 5.890m  
Busteni length: 6.200m  
Predeal length: 7.500m  
Excavation cross section: 84m<sup>2</sup> -132m<sup>2</sup>  
Effective cross section: 66m<sup>2</sup> -81m<sup>2</sup>



Typical tunnels cross section

## Excavation Method

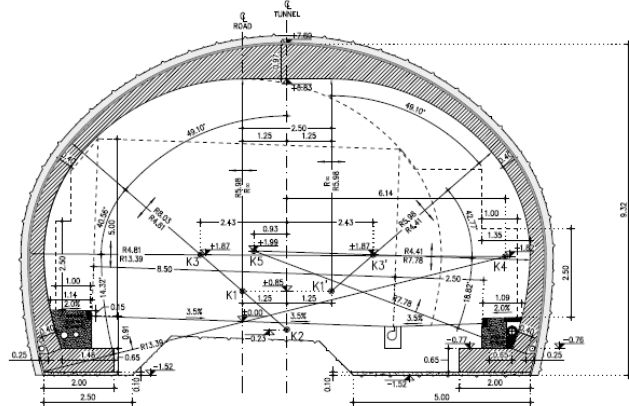
NATM – Mechanical excavation, drilling and blasting

## Final Lining

Reinforced concrete

## Highway Cuts and Embankments (Section from Ch. 110+600-168+600)

Embankments: L total = 26.0km  
Cuts: Ltotal = 11.0km



Typical embankment cross section

## Geology

Alluvial deposits, limestones, flysch, marbles, schist and conglomerates groundwater  
Max. overburden at the tunnels: 195m – 340m

## Our Services

Tender design and preparation of the technical offer on behalf of ViStrAda Nord

## Client

ViStrada Nord Consortium (VINCI S.A. - VINCI Construction Grand Projects S.A.S. - VINCI Construction Terrassement S.A.S. – STRABAG A.G. - STRABAG S.E. – AKTOR Concessions S.A. - AKTOR S.A.)

