

Detailed Designs of Major Industrial Projects

Bridge Power Generation Plant in Tema–Accra

Ghana, Detailed Designs

Ghana

Project

Detailed final geotechnical and structural designs of various buildings (concrete and steel), other structures and foundations required for the construction and commissioning of a 200MW fast track energy project with LPG, gas and diesel fuels in the Tema region, 16 miles east of Accra

Construction Cost

Total Cost approx. \$ 363 mil.

Project Schedule

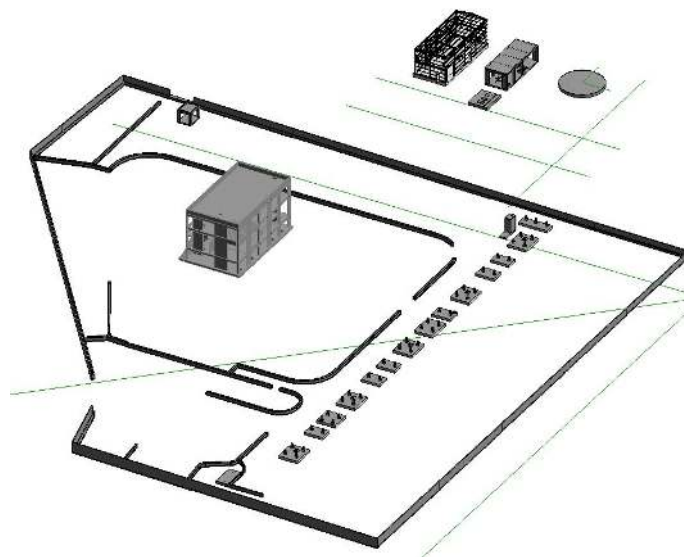
Detailed Design: 2017 - 2019
Construction: 2017 - in progress



Project Description

The Engineering Scope of the project includes the following items:

- 1) Structural design of concrete structures (including turbine pedestals)
- 2) Structural design of steel structures (incl. pipe rack, steam turbine building, administration & electrical building, secondary steel parts such as ladders, railings, gratings etc.)
- 3) Structural design of retaining walls
- 4) Hydraulic works design (incl. storm water drainage, chemical drainage, foul water)
- 5) Road design
- 6) Various secondary structures design (electrical cable channel, fire fighting system foundations etc.)
- 7) Geotechnical interpretation reports
- 8) Geotechnical designs for the foundation of various structures



Geology

Clays, clayey/silty sands, schists

Our Services

Detailed final geotechnical and structural designs of various buildings (concrete and steel), other structures and foundations
Development of BIM models

Client

Mytilineos Group of Companies (METKA – ELEMKA)

